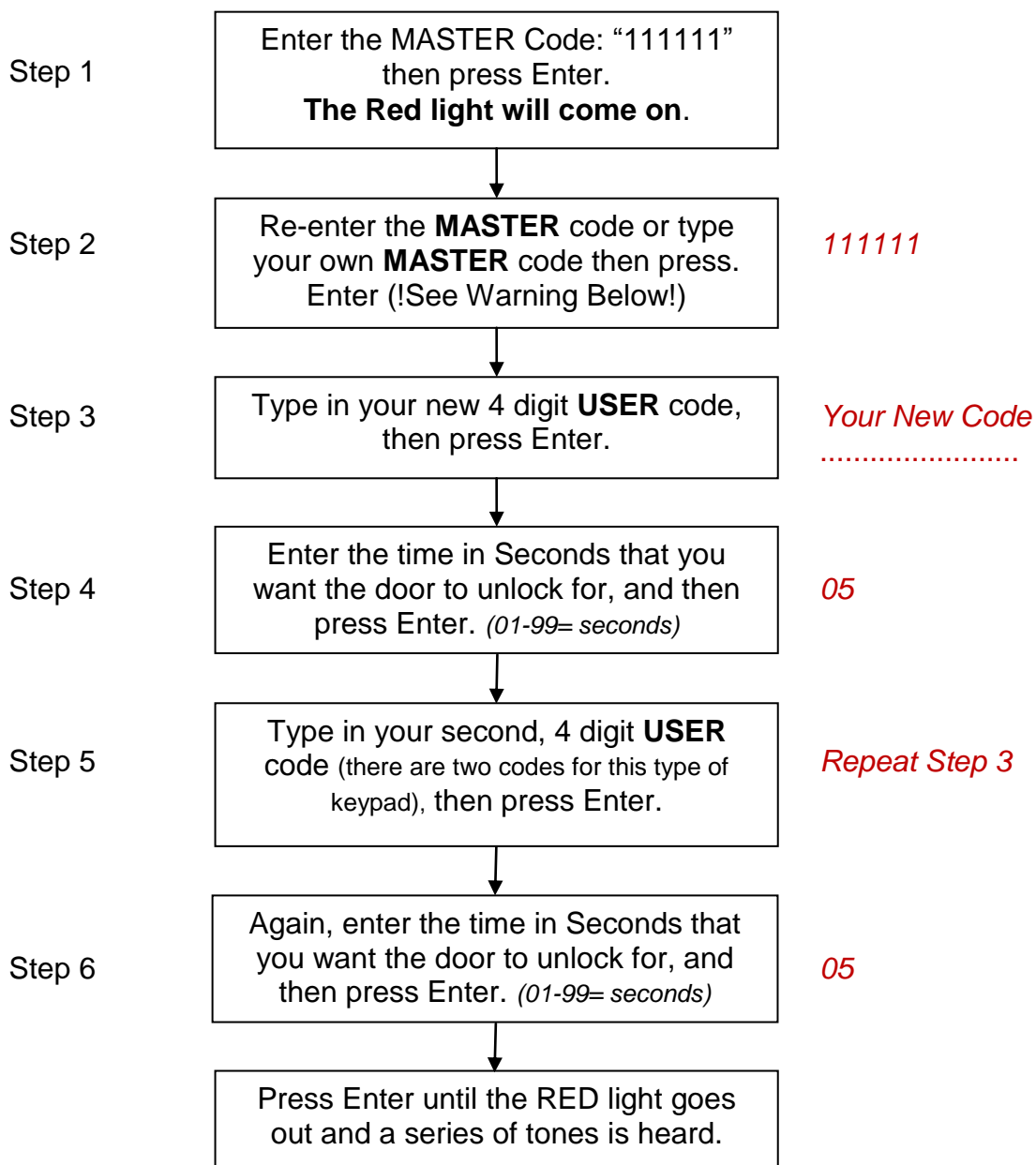


VX800-2N SHORT-CUT PROGRAMMING GUIDE FOR 2 DOOR CONTROL



Typically, 5 seconds (05) in steps 4 & 6 is sufficient in time for the keypad to operate but if you need further guidance, please contact us for advice

If at any stage of the programming sequence you make a mistake, press Cancel, then Enter until the RED light goes out, then start from the beginning. Tip: Entering numbers slowly will reduce the risk of miss-programming the Keypad. Each press will give a tone – you may have to be close to the unit to ensure you can hear it.

NOTE: It is recommended that you do not alter the default MASTER code but if you do you MUST keep the information to-hand & safe. If a Service Call is required and is found to be as a result of a programming error, or work cannot be completed because of an unknown MASTER code, the Keypad may be reset to Factory defaults by the Engineer and you could be charged for the call